

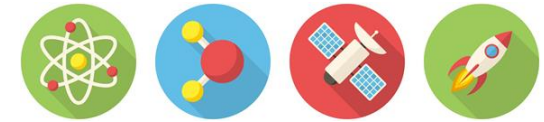


Prince William County Schools

Grade Two Science

Suggested Pacing Guide

2019 – 2020



FIRST QUARTER (47 DAYS)	SECOND QUARTER (43 DAYS)	THIRD QUARTER (43 DAYS)	FOURTH QUARTER (47 DAYS)
August 26-November 1	November 6-January 24	January 28-March 27	March 31-June 12
<p>Unit 3 Types of Weather (5 weeks) 2.6, 2.1</p> <ul style="list-style-type: none"> ➤ Different types of weather have specific characteristics ➤ Uses and importance of measuring and recording weather data ➤ Uses and importance of interpreting and tracking weather over time ➤ Weathering and erosion cause the land to change over time. ➤ Science & <u>Engineering</u> practices (<i>infused</i>) 	<p>Unit 1 Force and Motion (3 weeks) 2.2, 2.1</p> <ul style="list-style-type: none"> ➤ <u>Direct contact can cause an object to move (push/pull)</u> ➤ <u>Forces such as gravity</u> ➤ <u>magnetism can cause objects to move (poles, attract, repel, magnetic, and nonmagnetic)</u> ➤ <u>Forces affect daily life</u> ➤ Science & <u>Engineering</u> practices (<i>infused</i>) <p>Unit 2 Solids, Liquids, and Gases (2 weeks; 3 weeks total) 2.3, 2.1</p> <ul style="list-style-type: none"> ➤ Matter has mass and takes up space ➤ <u>Classify and compare materials as solids, liquids, and gases</u> ➤ Heating and cooling can change each phase of matter ➤ Science & <u>Engineering</u> practices (<i>infused</i>) <p>Nov. 11 – Veterans’ Day: No School Nov. 27-29 – Thanksgiving Break Dec. 23-Jan 3 – Winter Break Jan 20 – Martin Luther King Birthday: No School Jan. 27 – In-service/Workday</p>	<p>Unit 2 Solids, Liquids, and Gases, continued (1 week, 3 weeks total) 2.3, 2.1</p> <ul style="list-style-type: none"> ➤ Matter has mass and takes up space ➤ <u>Classify and compare materials as solids, liquids, and gases</u> ➤ Heating and cooling can change each phase of matter ➤ Science & <u>Engineering</u> practices (<i>infused</i>) <p>Unit 5 Animal Habitats (4 weeks) 2.5, 2.7a, 2.1</p> <ul style="list-style-type: none"> ➤ Living things are part of a system (interactions between living things and the nonliving surroundings) ➤ Components of an animal’s habitat ➤ Changes in habitats ➤ Weather and seasonal changes affect the growth and behavior of living things ➤ Science & <u>Engineering</u> practices (<i>infused</i>) <p>Feb. 17 – Presidents’ Day: No School March 30 – In-service/Workday</p>	<p>Unit 6 Plants as a Natural Resource (3 weeks) 2.8, 2.7b, 2.1</p> <ul style="list-style-type: none"> ➤ Plants are sources of useful products ➤ Plants provide oxygen, food ➤ Homes for living things ➤ Plants reduce the impact of wind and water ➤ Science & <u>Engineering</u> practices (<i>infused</i>) <p>Unit 4 Plant & Animal Life Cycles (3 weeks) 2.4, 2.1</p> <ul style="list-style-type: none"> ➤ <u>Types of animal life cycles (analyze the life cycle of an insect and a mammal)</u> ➤ Plant life cycle (analyze the life cycle of a flowering plant) ➤ Science & <u>Engineering</u> practices (<i>infused</i>) <p>April 6-10 – Spring Break April 13 – In-service/Workday May 25 – Memorial Day: No School June 15 – Workday</p>

Theme: Change Occurs all Around Us

Grade two science builds on the previous understanding of forces, water, weather, plants and animals. Students explore these concepts through the lens of *change*. Students examine how water changes phase, how visible and invisible forces change motion, how plants and animals change through life cycles, and how weather changes the Earth; all happening over short and long periods of time. Science and Engineering practices (2.1) should be incorporated as a part of inquiry-based instruction.

Note: Total instructional time for science and social studies is 36 weeks. The suggested pacing for science is based on 18 weeks of instruction over the course of the school year. Schools may make site-based decisions on when science and social studies instruction is delivered; however, to ensure consistency countywide, schools are highly encouraged to adhere to the *sequence* of science content outlined above. The underlined content is new to second grade.